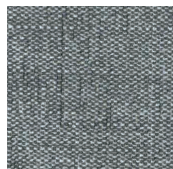


POLIFORM • SANTA MONICA

Chair

Body (Fabric)



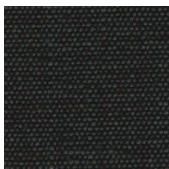
Lima21



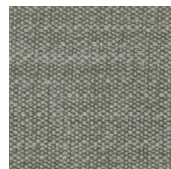
Lima43



Lima49



Lima63



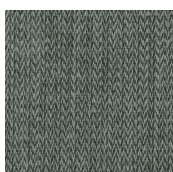
Lima67



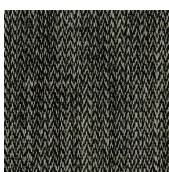
Itaca102



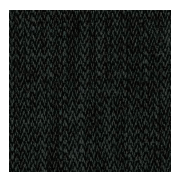
Itaca309



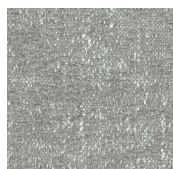
Itaca106



Itaca111



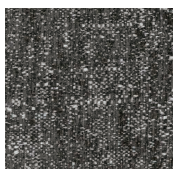
Itaca112



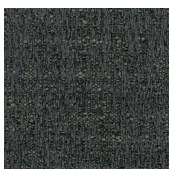
Olimpia11



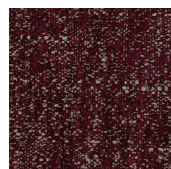
Olimpia23



Olimpia111

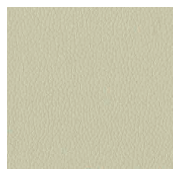


Olimpia53

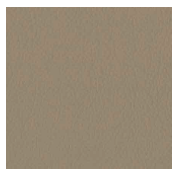


Olimpia113

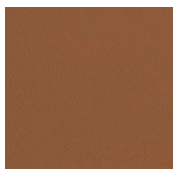
Body (Leather)



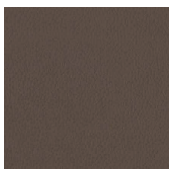
Spring Leather5508



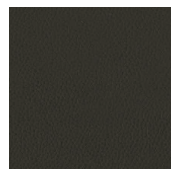
Spring Leather5426



Spring Leather5500



Spring Leather5400



Spring Leather5270



Spring Leather5300

※その他ファブリックのご用意もございますので、お気軽にお問い合わせください。

※There are also a variety of other fabric options available. Please contact us.

※海外張地を使用しているため色合いや風合いが製品ごとに異なったり、色移りや一般的な張り地とは異なる経年変化をする場合があります。

※Color transfer may occur in some cases as well as varying degree of color fastness compared to other textiles. The shade and look of finished product may vary.

※標準のステッチは<ノーマルダブルステッチ>です。

※Stitch : Double normal stitch