



Photography: Contratti Company

MAGIS Magis・PIÑA

[Chair]

Designer: JAIME HAYÓN

MAGISがワイヤーを編むロボット開発から先行着手しつつ、ハイメの豊かな想像力とデザインで実用的なプロダクトに昇華させたシリーズです。

「PIÑA」の由来は、フルーツのパイナップルから名付けられました。



Oval Cushion
Natural Type
¥150,000

Square Cushion
Natural Type
¥169,000

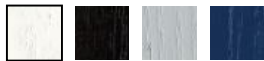
※表示価格は、メーカー希望小売価格(税抜)です。お買い上げの際には、別途消費税がかかります。

Color & Material

Painted Type
Frame(Steel)



Leg(Wood)



White Black Grey Blue

Natural Type
Frame(Steel)



White Black



Grey Blue

Leg (Wood)



Natural Ash

Cushion
Steelcut | Kvadrat (Fabric)



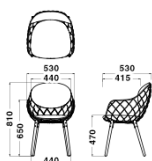
F-730 F-767



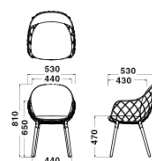
F-503 F-256

Dimensions & Weight

Chair (Ovalcushion)
W530 × D530 × H810/SH470
5.6kg



Chair (Squarecushion)
W530 × D530 × H810/SH470
5.6kg



Specification

Legs: Wood(Ash)
Body: Steel
Cushion: EPS(Polyurethane)
+ Fabric

Warranty

1 year



Photography : Max Rommel

MAGIS Magis・PIÑA

[Low Chair] [Table]

Designer: JAIME HAYÓN

MAGISがワイヤーを編むロボット開発から先行着手しつつ、ハイメの豊かな想像力とデザインで実用的なプロダクトに昇華させたシリーズです。

「PIÑA」の由来は、フルーツのパイナップルから名付けられました。



Low Chair: ¥420,000 Cushion: ¥20,000



Foot Stool: ¥189,000



Low Table: ¥94,000

※表示価格は、メーカー希望小売価格(税抜)です。お買い上げの際には、別途消費税がかかります。

Color & Material

Painted Type
Frame(Steel)



Leg(Wood)



White Black Grey Blue

Natural Type
Frame(Steel)



White Black



Grey Blue

Leg (Wood)

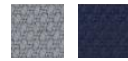


Natural Ash

Cushion
Steelcut | Kvadrat(Fabric)



F-730 F-767



F-503 F-256

Low Table
Worktop(Wood)



White Black Coral Red

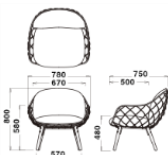


White Black Coral Red

Dimensions & Weight

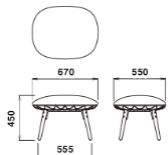
LowChair

W780 × D750 × H800/SH480
19.0kg



FootStool

W670 × D550 × H450
5.2kg



Table

φ400 × H470
2.7kg



Specification

Legs/Tabletop: Wood(Ash)
Body: Steel
Cushion: EPS(Polyurethane)
+ Fabric

Warranty

1 year



Photography: Contratti Company

MAGIS Magis · PIÑA

[Chair]

Designer: JAIME HAYÓN

Celebrating the maximum capabilities of materials, Magis in-house wire weaving techniques has realized this metal woven design by the renowned Spanish designer Jaime Hayón. The structure of the PIÑA gives rise to its name from its resemblance of a pineapple.



Oval Cushion
Natural Type
¥150,000

Square Cushion
Natural Type
¥169,000

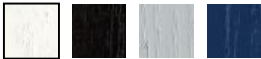
※Prices are subject to change without prior notice. All prices exclude VAT.

Color & Material

Painted Type
Frame(Steel)



Leg(Wood)



White Black Grey Blue

Natural Type
Frame(Steel)



White Black



Grey Blue

Leg (Wood)



Natural Ash

Cushion
Steelcut | Kvadrat (Fabric)



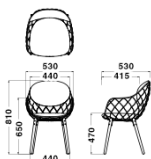
F-730 F-767



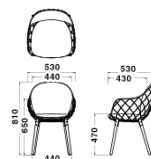
F-503 F-256

Dimensions & Weight

Chair (Ovalcushion)
W530 × D530 × H810/SH470
5.6kg



Chair (Squarecushion)
W530 × D530 × H810/SH470
5.6kg



Specification

Legs: Wood(Ash)
Body: Steel
Cushion: EPS(Polyurethane)
+ Fabric

Warranty

1 year



Photography : Max Rommel

MAGIS Magis · PIÑA

[Low Chair] [Table]
Designer: JAIME HAYÓN

Celebrating the maximum capabilities of materials, Magis in-house wire weaving techniques has realized this metal woven design by the renowned Spanish designer Jaime Hayón. The structure of the PIÑA gives rise to its name from its resemblance of a pineapple.



Low Chair: ¥420,000 Cushion: ¥20,000



Foot Stool: ¥189,000



Low Table: ¥94,000

※Prices are subject to change without prior notice. All prices exclude VAT.

Color & Material

<p>Painted Type Frame(Steel)</p>	<p>Natural Type Frame(Steel)</p>	<p>Leg (Wood)</p>	<p>Cushion Steelcut Kvadrat(Fabric)</p>	<p>Low Table Worktop(Wood)</p>
<p>Leg(Wood)</p>	<p>White Black</p>	<p>Natural Ash</p>	<p>F-730 F-767</p>	<p>Frame(Steel)</p>
<p>White Black Grey Blue</p>	<p>Grey Blue</p>		<p>F-503 F-256</p>	<p>White Black Coral Red</p>

Dimensions & Weight

<p>LowChair W780 × D750 × H800/SH480 19.0kg</p>	<p>FootStool W670 × D550 × H450 5.2kg</p>	<p>Table φ400 × H470 2.7kg</p>
--	--	---

Specification

Legs/Tabletop: Wood(Ash)
Body: Steel
Cushion: EPS(Polyurethane)
+ Fabric

Warranty

1 year