

# OSFA

Flexible, modular design adapts to changing environments, providing customisable, lasting value.



## FEATURES



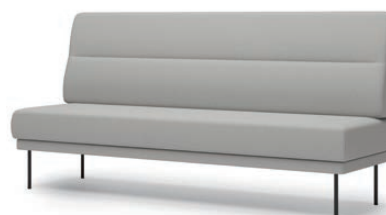
### RELAX sofa

Designed for maximum comfort and relaxation, this sofa is the perfect place to take a break.



### WORK sofa

This sofa is optimized for work environments. It can be modified to suit the nature of the work.

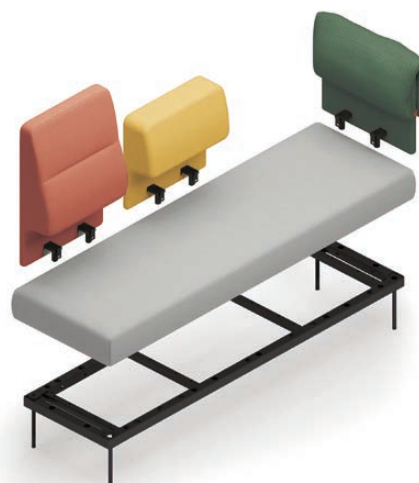


## FEATURES

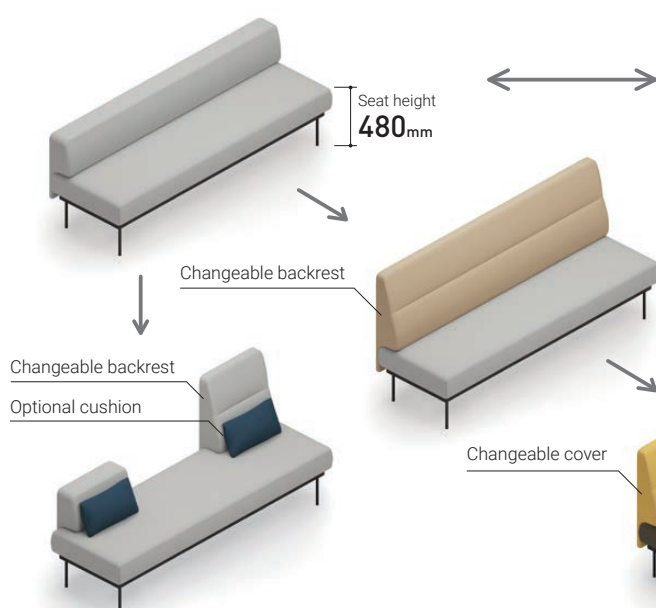
### Fully interchangeable components ensure lasting value and easy maintenance

#### Adaptable to different workstyles and spaces

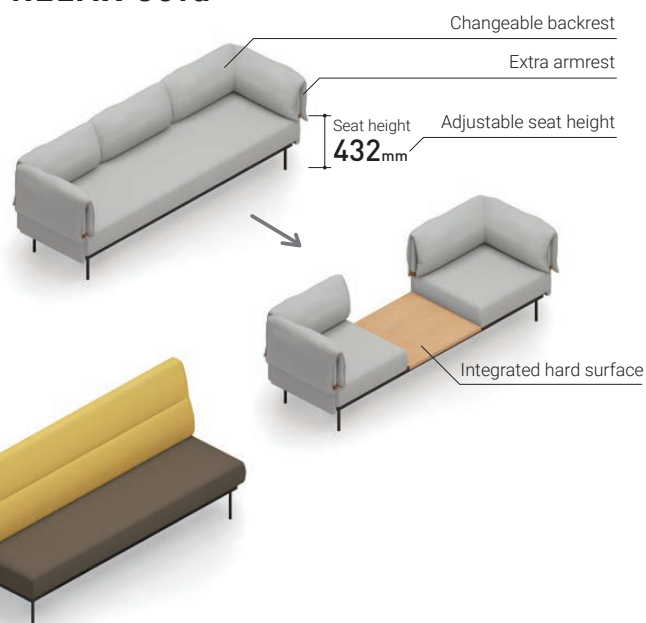
Modular design enables easy assembly, disassembly, reassembly and relocation. Swap components and covers to continuously adapt features and design to evolving needs.



### WORK sofa



### RELAX sofa



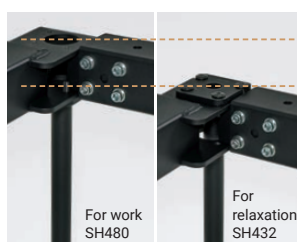
#### Changeable backrests, armrests, and seats<sup>\*1,2</sup>

Backrests and armrests can be slotted into the frame and seats can be laid onto the frame. In this way, the sofa can be easily disassembled and relocated.



#### Changeable cover

The covers of the seats and backrests can be changed for a new and different look, enabling its long-term use.



#### Adjustable seat height<sup>\*3</sup>

The seat height can be changed by reconfiguring the frames for two different modes: Work and Relax. Easy adjustment can be made without purchasing additional parts.



#### Planter boxes

Planter boxes in various sizes are available as optional attachments for the sofas.

<sup>\*1</sup>. When moving a backrest or armrest onto another part of the frame, you must first move the polymer sleeve to that part of the frame.

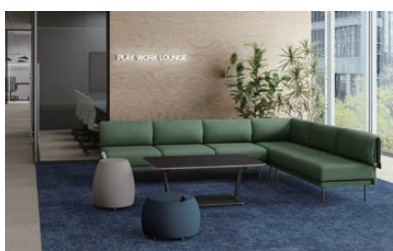
<sup>\*2</sup>. Owing to the modular structure of the backrest, armrest, and seat, their fit and appearance may differ depending on the configurations.

<sup>\*3</sup>. Do not attempt to adjust the seat height yourself. Seat height adjustments must be conducted by the professional installer.



## Choose from the preset configurations

### RELAX sofa



## LINEUP

Low-back sofa  
with armrests

Single backrest, single seat



NTK-RLA14F - 6AQ6Q6 2

Sectioned backrest, single seat



NTK-RLC18F - 6AQ6Q6 2

Sectioned backrest, sectioned seat



NTK-RLB21F - 6AQ6Q6 2

Low-back sofa  
without armrests

Single backrest, single seat



NTK-RLA18L - 6AQ6Q6 2

Sectioned backrest, single seat



NTK-RLC21L - 6AQ6Q6 2

Sectioned backrest, sectioned seat



NTK-RLB12L - 6AQ6Q6 2

Bench

Single bench



NTK-RBA14L - 6AQ6Q6 2



NTK-RBA09L - 6AQ6Q6 2



NTK-RBASCL - 6AQ6Q6 2

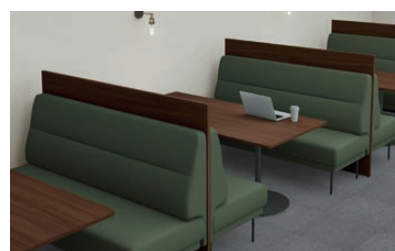
Sectioned bench



NTK-RBB21L - 6AQ6Q6 2

# Choose from the preset configurations

## WORK sofa



## LINEUP

### Mid-back sofa

#### Single backrest, single seat



NTK-WMA21L - 6AE2E2 2

#### Sectioned backrest, single seat



NTK-WMC18L - 6AE2E2 2

#### Sectioned backrest, sectioned seat



NTK-WMB14N - 6AE2E2 2

### Low-back sofa

#### Single backrest, single seat



NTK-WLA21L - 6AE2E2 2

#### Sectioned backrest, single seat



NTK-WLC18N - 6AE2E2 2

#### Sectioned backrest, sectioned seat



NTK-WLB12L - 6AE2E2 2

### Bench

#### Single bench



NTK-WBA18N - 6AE2E2 2



NTK-WBA07N - 6AE2E2 2



NTK-WBAUCL - 6AE2E2 2

#### Sectioned bench



NTK-WBB12L - 6AE2E2 2

# Configure the components

Configure components as desired: Simply assemble the frame and upper parts (backrest, seat, etc.) to complete your custom sofa.



## COMPONENTS

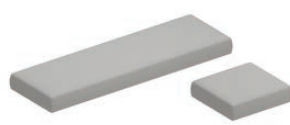
### Frame set



NTKF-21L - E6AG2E2 1

NTKF-09N - E6A 1

### Seat set



NTKS-21 - G2E2 2

NTKS-07 - G2E2 2

### Frame tabletop



NTKA-T06 - MP1 1

### Backrest set for medium-back WORK sofa



NTKH-WM21 - G2E2 2

NTKH-WM05 - G2E2 2

### Backrest set for low-back WORK sofa



NTKH-WL21 - G2E2 2

NTKH-WL05 - G2E2 2

### Backrest set for RELAX sofa



NTKH-RL21 - G2Q6 2

NTKH-RL06 - G2Q6 2

### Backrest set for inside corner of RELAX sofa



NTKH-RLUC - G2Q6 2

### Armrest set for RELAX sofa



NTKH-RL06 - G2Q6 2

● Please use components of the same modular size in a combination. Select from three standard widths: 600mm, 700mm, and 900mm.

● Metal connector (NTKJ-S-1) is needed when placing two or more sofas together.

## ACCESSORIES



Planter box, square type



Planter box, seat-back type



Stools



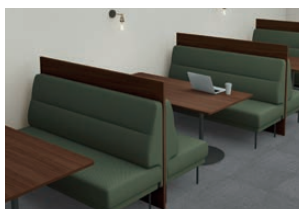
Coffee table



Cushion



Rug



Back panel



Replacement cover sets for seat and backrest

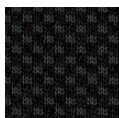
## COLOR & MATERIAL

### Base frame, and coffee table



E6A  
Black

### Backrest, seat



G2E6  
Black



G2E2  
Light gray



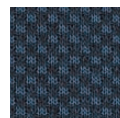
G2M6  
Dark greige



G21K  
Soft beige



G2Q6  
Deep green



G2T7  
Navy

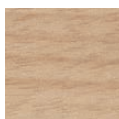


G20Y  
Pale terracotta

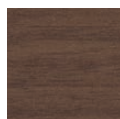


G21S  
Olive yellow

### Tabletop



MP1  
Natural oak



MU5  
Brown walnut

### Planter box, back panel



MT1  
Natural oak



MV5  
Brown walnut



# COLOR & MATERIAL

## Custom order upholstery

### Kamikara

Kamikara is sophisticated upholstery made from leftover pulp generated in the production of Kokuyo notebooks.



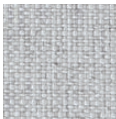
#### Backrest, seat



FAE4



FAM4

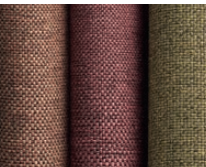


FAE2

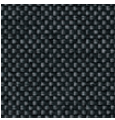


FAV1

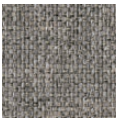
### Camira-Rivet



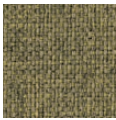
#### Backrest, seat



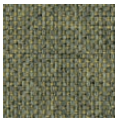
EGL37



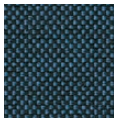
EGL01



EGL10



EGL07



EGL35



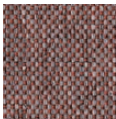
EGL23



EGL21



EGL12



EGL09

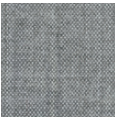


EGL14

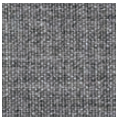
### Kvadrat remix 3



#### Backrest, seat



123



133



383



223



233



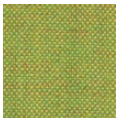
452



823



866



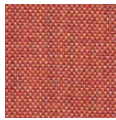
912



982



612

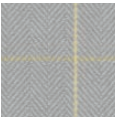


632

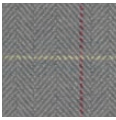
### Ribbon



#### Backrest, seat



RB331



RB333

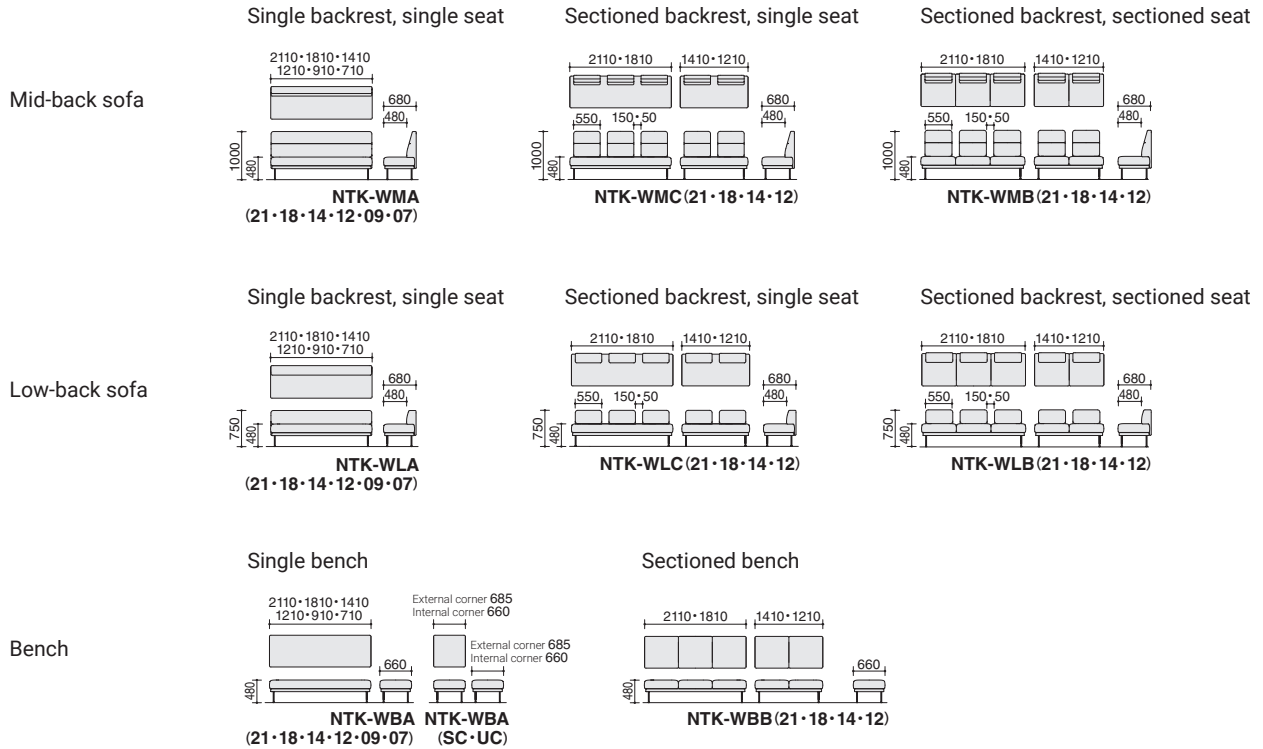


RB348

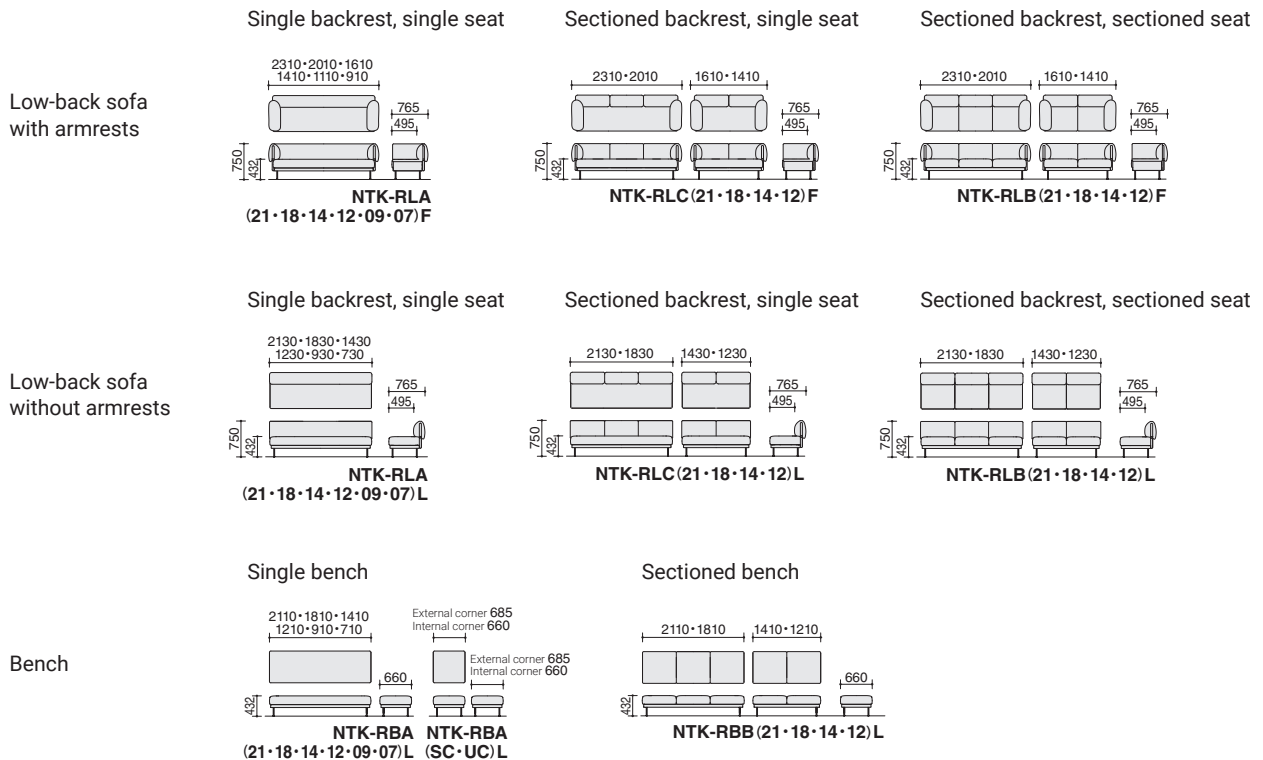


# DIMENSIONS

## WORK sofa



## RELAX sofa



# MATERIALS

<b>WORK sofa</b>  <b>Backrest and seat</b> Polyurethane foam.  <b>Frame</b> Powder-coated steel.  <b>Base</b> ø19.1 mm powder-coated steel pipe.	<b>Frame set</b>  <b>Frame</b> Powder-coated steel.  <b>Base</b> ø19.1 mm powder-coated steel pipe.	<b>Backrest set and armrest set</b>  <b>WORK sofa</b> Polyurethane foam.  <b>RELAX sofa</b> Polyurethane foam, polyester cotton.
<b>RELAX sofa</b>  <b>Backrest and seat</b> Polyurethane foam, polyester cotton.  <b>Frame</b> Powder-coated steel.  <b>Base</b> ø19.1 mm powder-coated steel pipe.	<b>Frame tabletop</b>  <b>Surface</b> Melamine board.  <b>Edge</b> ABS.  <b>Metal connectors</b> Powder-coated steel.	<b>Metal connectors</b> Electroplated steel.  <b>Polymer sleeve</b> Nylon.

Note: WORK sofa type and RELAX sofa type cannot be connected together.

For RELAX sofa with armrests, connection is not possible on the side where the armrest is installed.