

Leafline

With their excellent storability and easy handling, Leafline flip-top tables make layout reconfigurations stress-free.



2013
GOOD DESIGN
AWARD

FEATURES



Under-shelf

Optional under-shelf for storage. Smart design ensures compact 90 mm nesting, with or without the shelf.



Gap-Free Alignment

The square-edge design ensures a precise fit when tables are adjoined, creating a seamless and continuous workspace.



Compact nesting

Designed for maximum efficiency, these tables nest in a straight line with only 90 mm between legs for economical, compact storage.



Easy handling

The structure aligns the rotation flap with the tabletop's center of gravity, making it easier to flip than conventional designs. Its near-vertical base angle ensures stable movement.

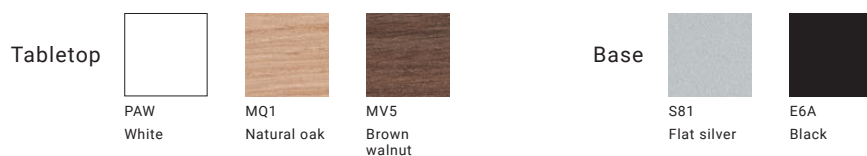
Nesting Image



Castors

Castors include integrated adjusters (up to 10 mm range), allowing adjoined tables to be perfectly matched in height.

COLOR & MATERIAL



LINEUP

With modesty panel



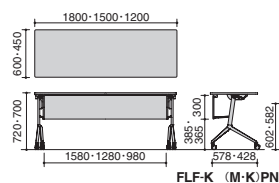
Without modesty panel



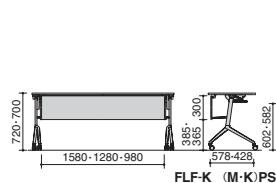
DIMENSIONS

With modesty panel

Without under-shelf

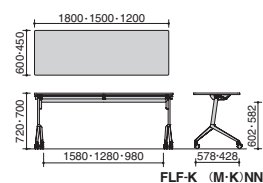


With under-shelf

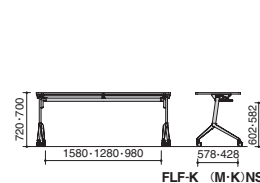


Without modesty panel

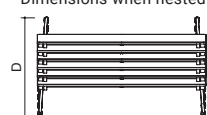
Without under-shelf



With under-shelf



Dimensions when nested



Depth	D600	D=578+90(n-1)
	D450	D=427+90(n-1)
Width	Same as tabletop.	
Height	D600	H=1020
	D450	H=936

Caution: The D600 and D450 tables cannot be nested together.

MATERIALS

Tabletop

Surface: Melamine board.
Edge: Extruded ABS.
Core: Particle board.
Tabletop thickness: 20 mm.

Leg

Melamine-coated powder-coated steel pipe (46.5×24.5 mm).

Base

Melamine-coated die-cast aluminum.
Pair of ø50 mm nylon twin-wheel castors with stoppers.

Under-shelf

Melamine-coated powder-coated steel pipe.
End cap: Molded polypropylene (nylon).

Modesty panel

Extruded ABS.

Caution: Dark-colored tabletops may show fingerprints and other smudges more noticeably depending on usage and lighting conditions.